



PURPOSE


1. Create a physical feature and political map of your World EXPO country
2. Apply all that you have learned about mapping
3. This is your final map :)

DIRECTIONS

1. Visit [worldatlas.com](https://www.worldatlas.com)
 - a. <https://www.worldatlas.com/continents.html>
2. Locate the map of the continent your country is on
 - a. Scroll down
3. Click on your country
4. Click the view larger and scroll down
5. Use this map to create yours
 - a. If there are features not labeled you may need to do more research to find the names.

OPTIONS

1. Create a paper map
2. Create a salt dough map
 - a. Directions are included on slides 6-9
3. Build a map out of wood
4. Create a digital map
5. Create your own





1. Outline of country
2. Bordering countries
3. Physical features
4. Capital city
5. All features, neighboring countries & cities labeled
6. Specific title
7. Map key ~ see next slide
8. Compass rose



1. Be sure to include all colors and textures
2. If you create a paper map you can label all features directly on the map.
3. If you create a salt dough map you will want to number your features on the map and then label them in the key.
 - a. For example ~ 1. Pacific Ocean
 - b. 2. Andes Mountains
4. Check your spelling & capitals



1. Recipe:
 - a. 1 cup flour
 - b. $\frac{1}{2}$ cup salt
 - c. Add water and mix till consistency of bread dough
2. 8 $\frac{1}{2}$ x 11 piece of cardboard
3. In pencil draw the outline of your country
4. Shape dough into physical features

***OPTIONAL: Salt Dough map is just one idea, not required.**



1. Building your map suggestions
 - * shape the dough to about a $\frac{1}{4}$ inch thick within countries borders
 - * do not need dough on neighboring countries
 - * use a map as a guide to build your physical features
 - rivers/lakes = use pen cap to press into dough, DO NOT drag through dough
 - deserts = toothpick holes
 - mountains/volcanoes = build mini ones out of dough
 - other features = create a design in the dough
 - capitol = create a small mound of dough and put a toothpick in it
2. Let dry for 3-5 days



1. Once the map is dry you may begin to paint
2. Easiest to paint top to bottom, left to right
3. Choose your colors for features and be sure they are included in the map key
4. Can paint neighbors any color not used
5. Let the paint dry
 - a. About 1 day
 - b. Don't worry if paint begins to crack, that is normal



1. Draw in borders, label neighbors, label oceans or seas with sharpie on the cardboard
2. You can number your features and cities
3. Map Key: write the number
Next to the number write the name of the physical feature
Spell correctly
Capitalize
Write neatly
Splotch of paint colors used
Label what the splotch represents (desert, valley, peninsula, etc.) (Green = land or Blue = oceans)
4. Map key, compass rose & title can be glued on



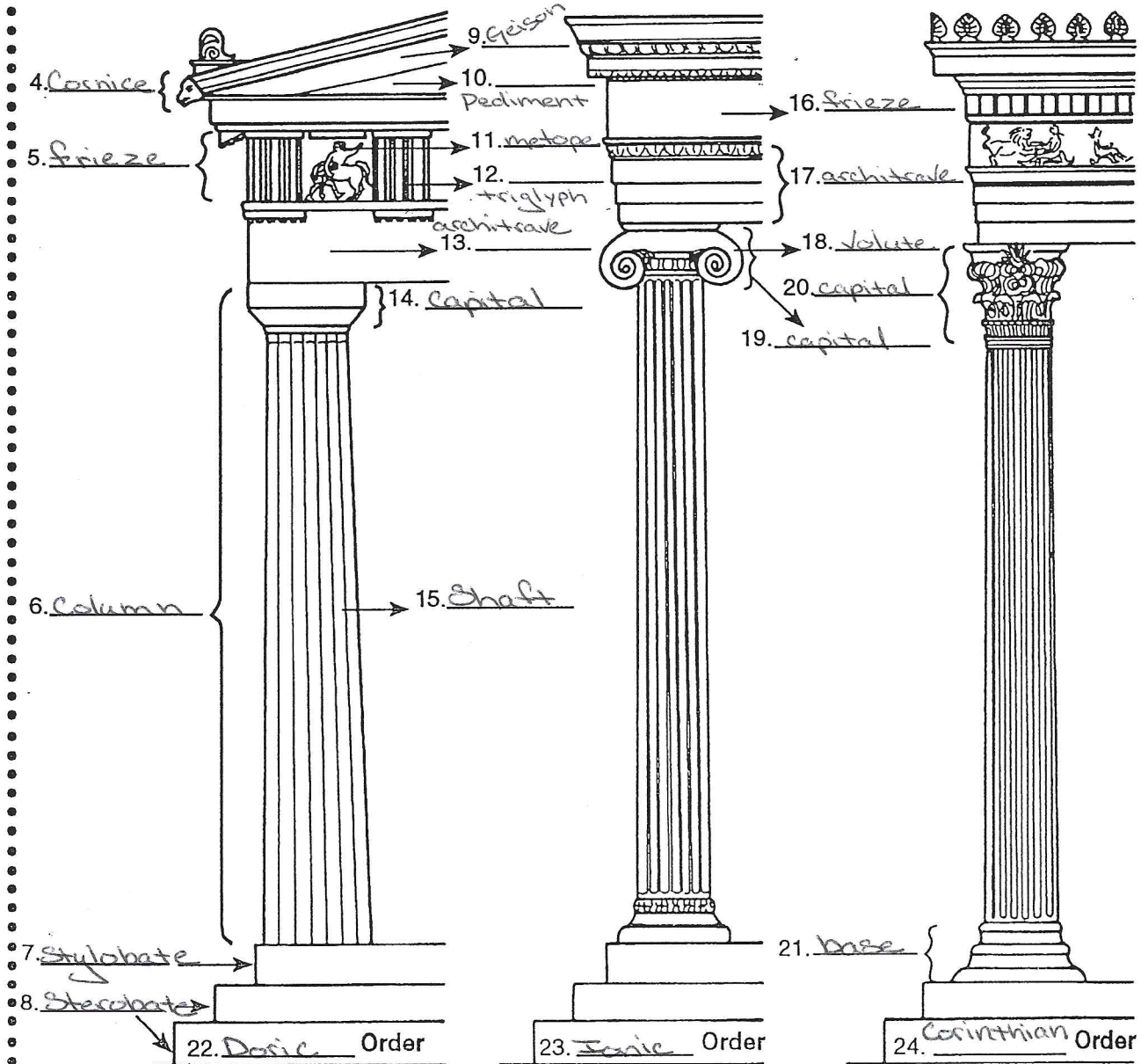
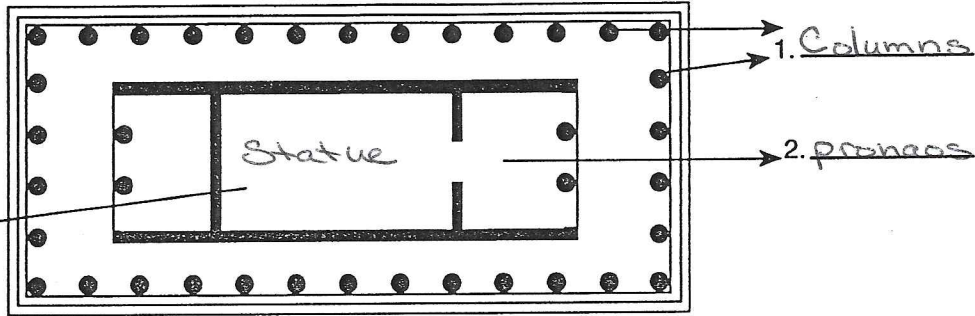
1. How to turn in your map
 - a. All maps are turned into Mrs. Dotson
 - b. Paper map or digital maps can be shared or emailed to Mrs. Dotson
 - c. Salt Dough Map
 - i. Take pictures and send to Mrs. Dotson
 - d. Any other type of map
 - i. Take a picture and send it to Mrs. Dotson

Please do not drop off maps at the school, thank you :)

Name _____ Date _____

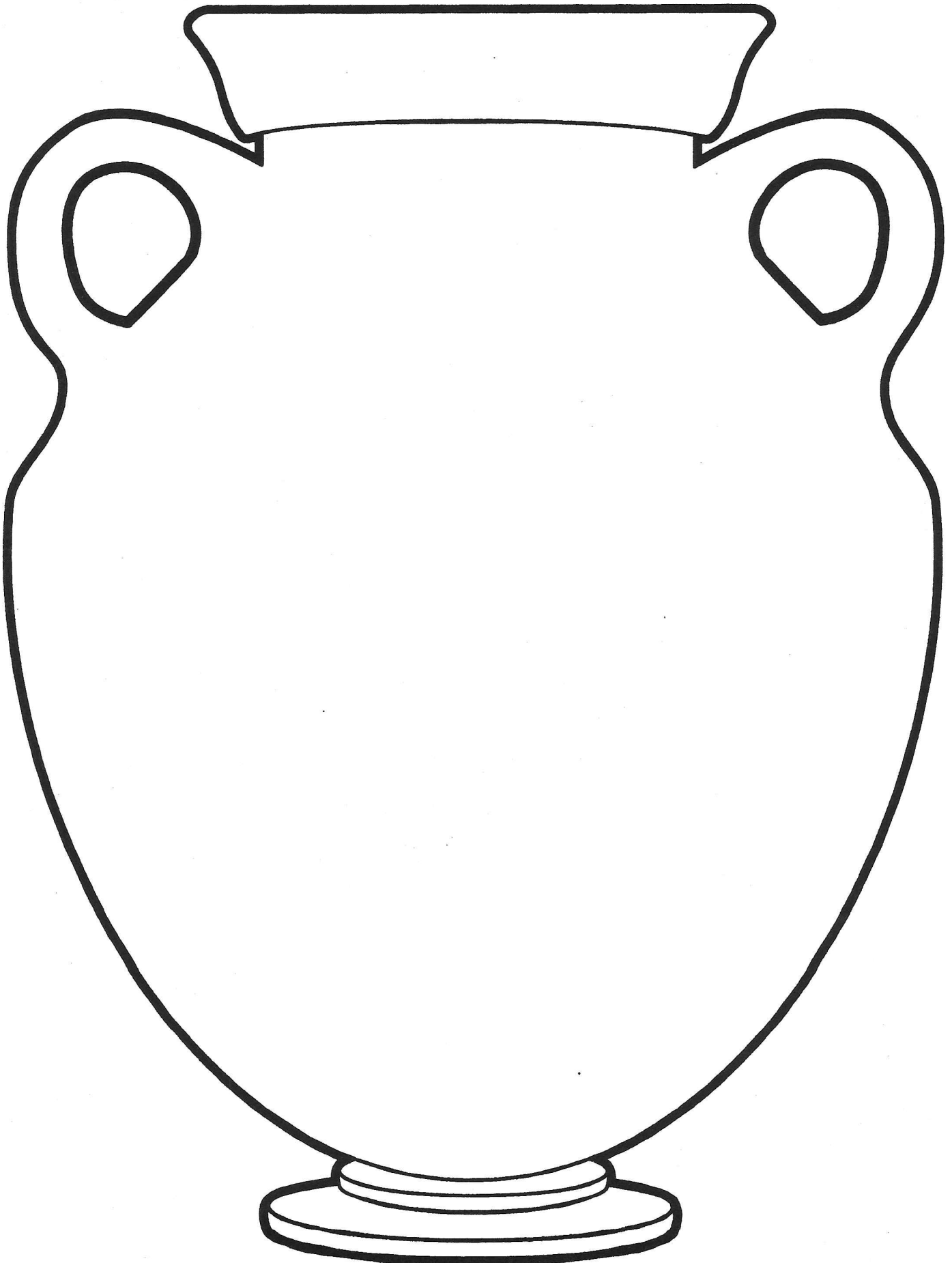
IDENTIFYING THE PARTS OF A GREEK TEMPLE

Identify the architectural orders and the different parts of a Greek temple. Write in the correct terms on the lines next to the parts or make a numbered list on a sheet of paper.



Pattern

Use with "A Myth Of My Own" on page 32.



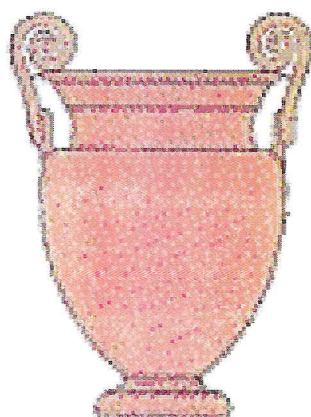
Common Shapes and Comparative Sizes



Amphora



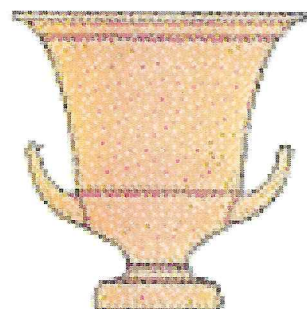
Pelike



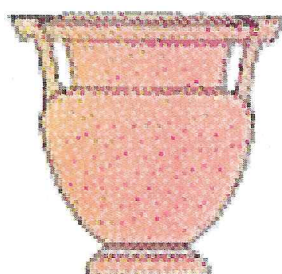
Volute Krater



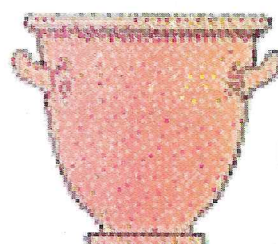
Louphoros



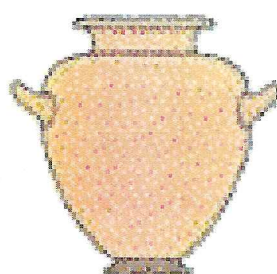
Calyx Krater



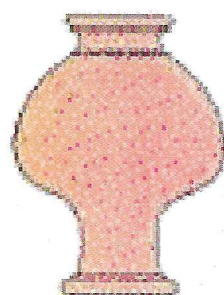
Column Krater



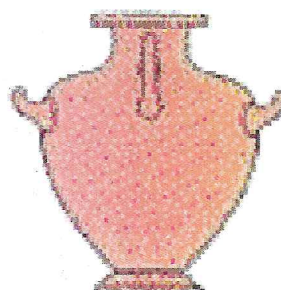
Bell Krater



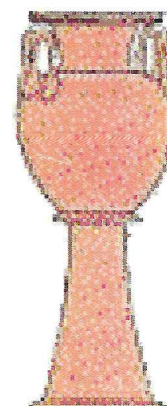
Stamnos



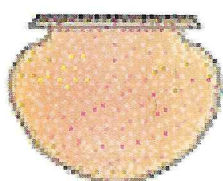
Psykter



Hydria



Lebes Gamikos



Lebes



Lekythos



Squat
Lekythos



Qinochoe



Kantharos



Kylix



Stemless
Kylix



Skyphos



Aryballos



Alabastron



Pysis